

How to use the Comparative Pathology OMERO Server

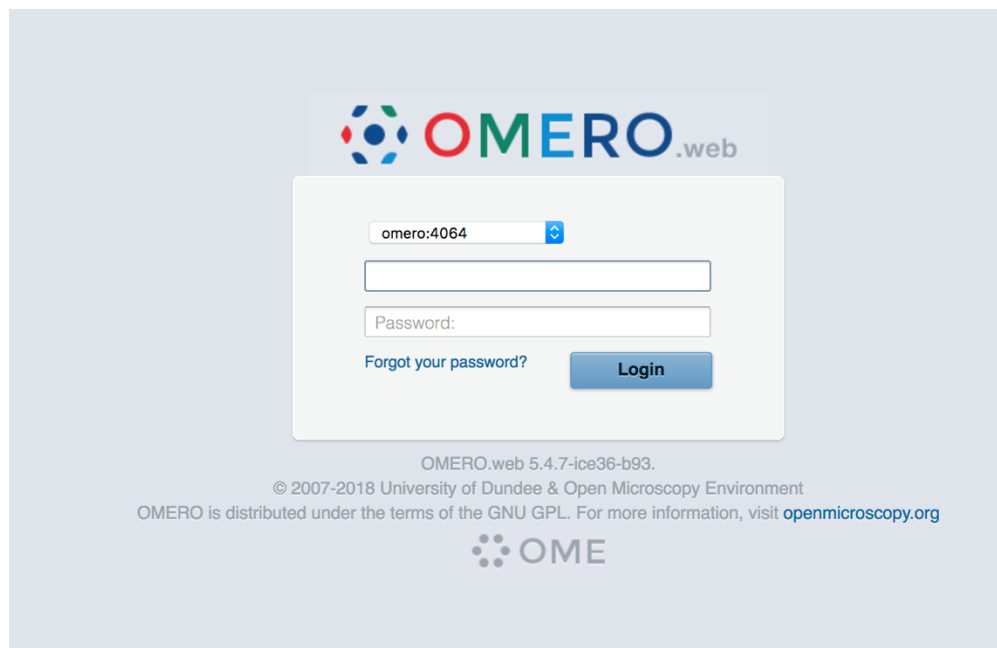
Registration

See the administrator (Mike Wicks / Mark Arends / Kate Britton / Ewan McDowall) to set up an account for you.

NOTA BENE!

If you do NOT have an account on an OMERO Server, you will NOT be able to “see” any Images from that OMERO server in the Comparative Pathology Workbench! Instead you will only see the Names of the images referenced in the Workbench.

When you have obtained an account on the Comparative Pathology OMERO server, login in here: <https://omero-czi-cpw.mvm.ed.ac.uk/webclient/>



When you log in successfully, you should see the following screen:




PLEASE change your password by using the User, User Settings Main Menu Option, in the top right hand corner - Check that your Default Group is “MVM”

User

Statistics

Fields marked in red are mandatory.



Change

Username:

mwicks23

First name:

Mike

Middle name:

Last name:

Wicks

Email:

michael.wicks@ed.ac.uk

Institution:

Edinburgh University

Default group:

MVM (nwra--)

Password:

Change Password

Save

Loading Data to the Comparative Pathology OMERO Server

Download and install “OMERO Insight” from here:

<https://www.openmicroscopy.org/omero/downloads/>

Run OMERO Insight

Run Insight, and you should see the Login Dialog, thus:

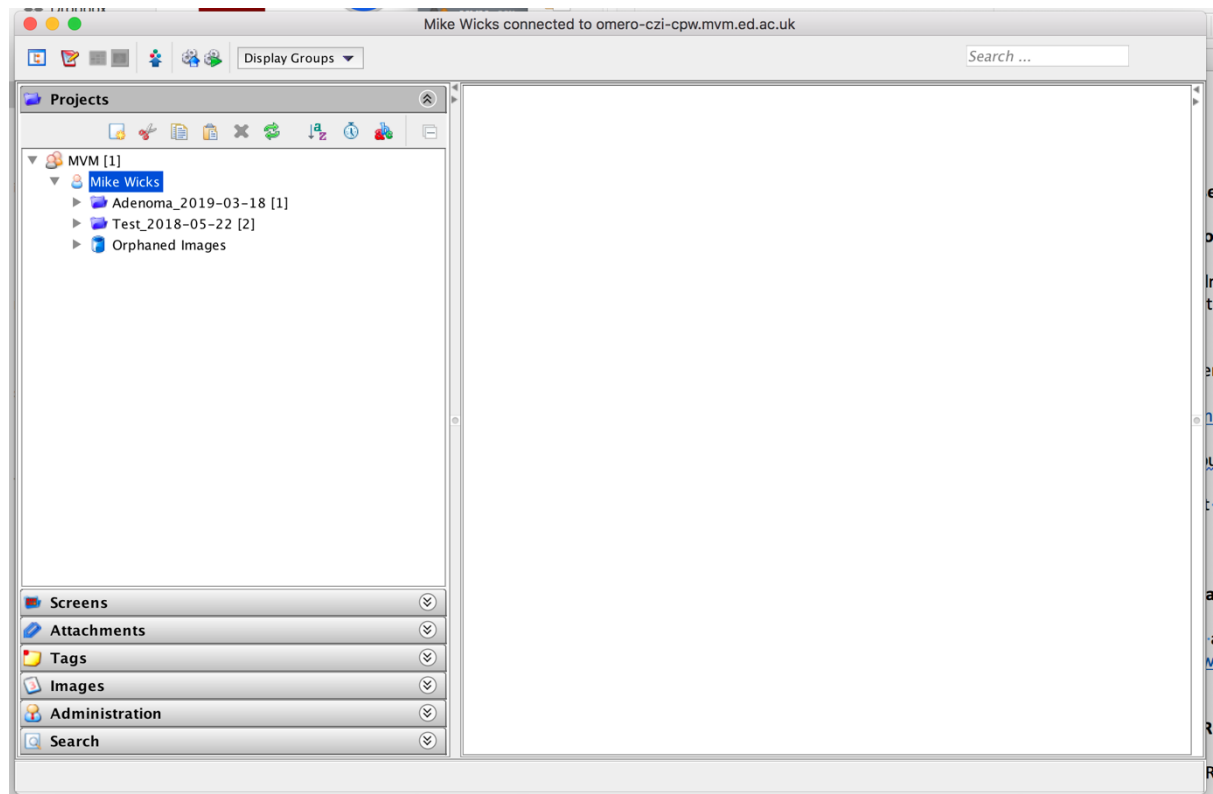


Add the URL “omero-czi-cpw.mvm.ed.ac.uk” to Insight using the “Spanner” icon.

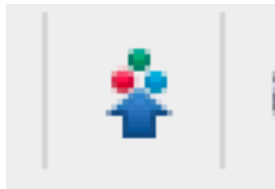
Ensure the Padlock is SHUT

Supply your OMERO Credentials – Username and Password

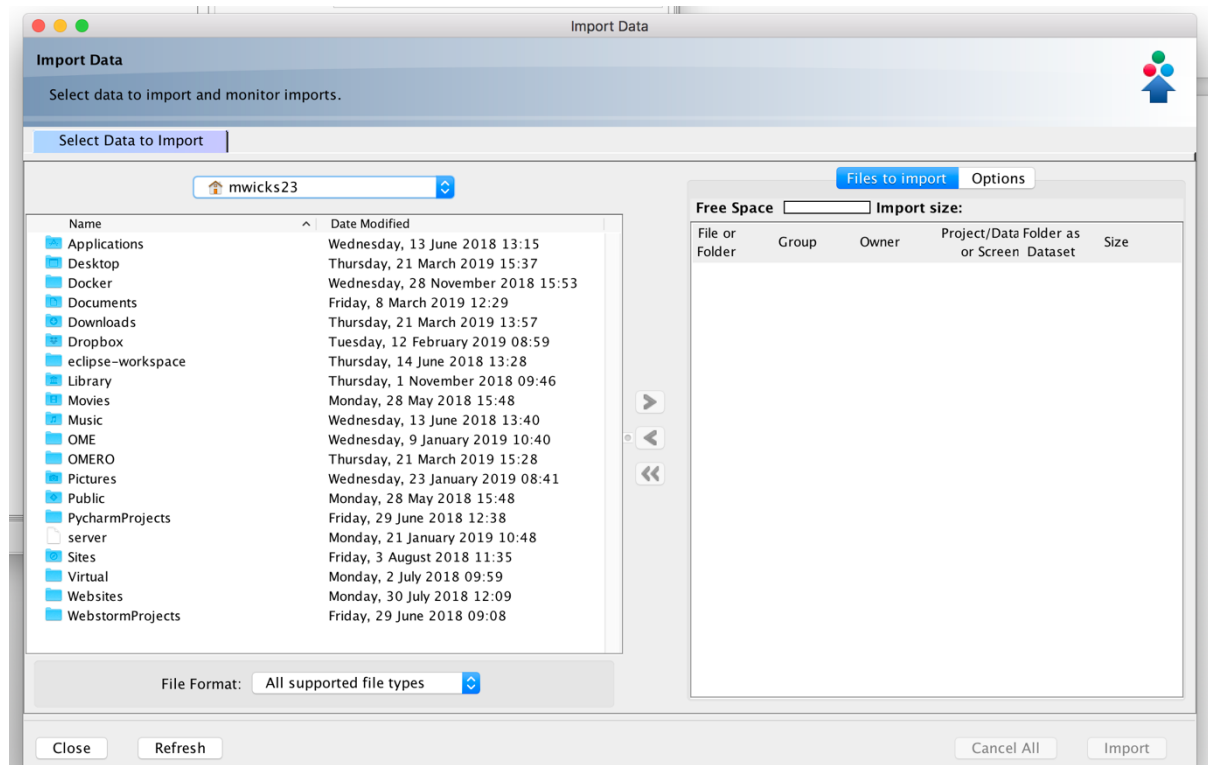
When you successfully log in, you should see a screen like this:



To upload data, press the “Importer” icon:



You will then see the Importer Dialog, thus:



Simply navigate to the location of the data you want to upload, using the controls on the Left-Hand Side of the screen, and press the “>” or “>>” icons to select your required data.

You are then presented with a further Dialog, requesting you to define the destination of your upload.

Define the destination of your upload, using the next dialog:

Import Location - Select where to import your data.

Group

Import For

☒ Projects ☐ Screens

Project New...

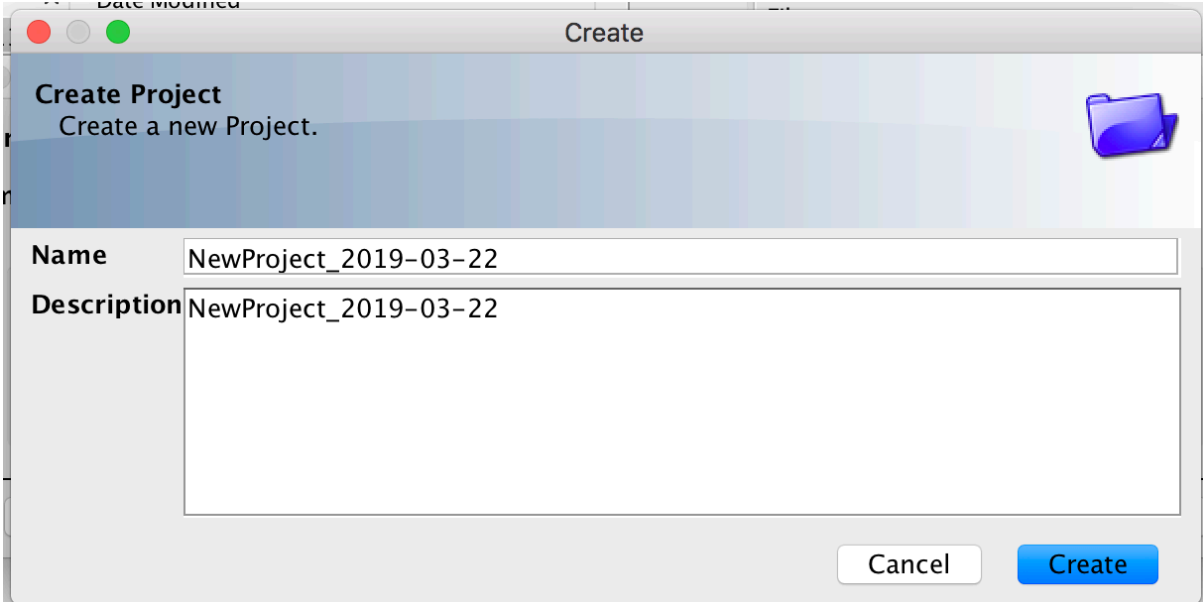
Dataset New...

Close Refresh

NOTA BENE!

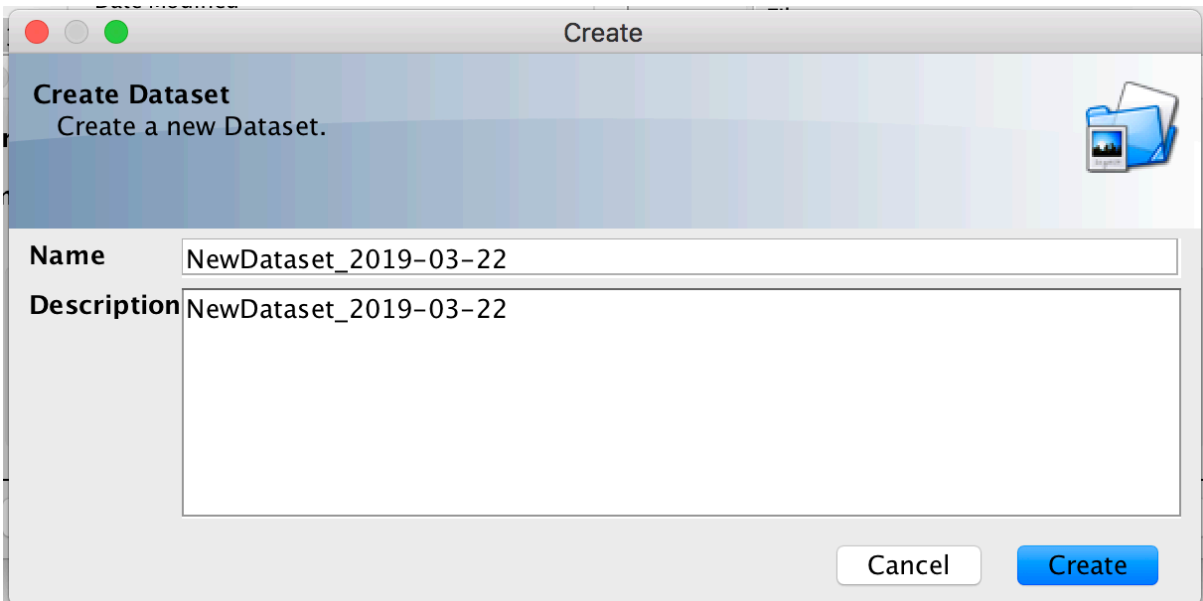
- I recommend creating Project and Dataset Names and Descriptions that are as FULLY DESCRIPTIVE as possible;
- I recommend avoiding using SPACES or any “special” characters in the Project & Dataset Names!
- I recommend appending/prepending a full date in the format YYYY-MM-DD to the end of the Project/Dataset Name – this helps you to discover the correct data in future, as it is obvious WHEN you created it; it also helps when you sort Names, as ascending alphabetical order is then the same as ascending Creation Date.

You WILL be prompted to select both a new or existing Project and Dataset, thus:



A macOS-style dialog box titled "Create" with a blue header bar. The header bar contains the text "Create Project" and "Create a new Project." on the left, and a blue folder icon on the right. Below the header, there are two text input fields. The first is labeled "Name" and contains the text "NewProject_2019-03-22". The second is labeled "Description" and contains the text "NewProject_2019-03-22". At the bottom right of the dialog, there are two buttons: a white "Cancel" button and a blue "Create" button.

AND



A macOS-style dialog box titled "Create" with a blue header bar. The header bar contains the text "Create Dataset" and "Create a new Dataset." on the left, and a blue folder icon with a photo thumbnail on the right. Below the header, there are two text input fields. The first is labeled "Name" and contains the text "NewDataset_2019-03-22". The second is labeled "Description" and contains the text "NewDataset_2019-03-22". At the bottom right of the dialog, there are two buttons: a white "Cancel" button and a blue "Create" button.

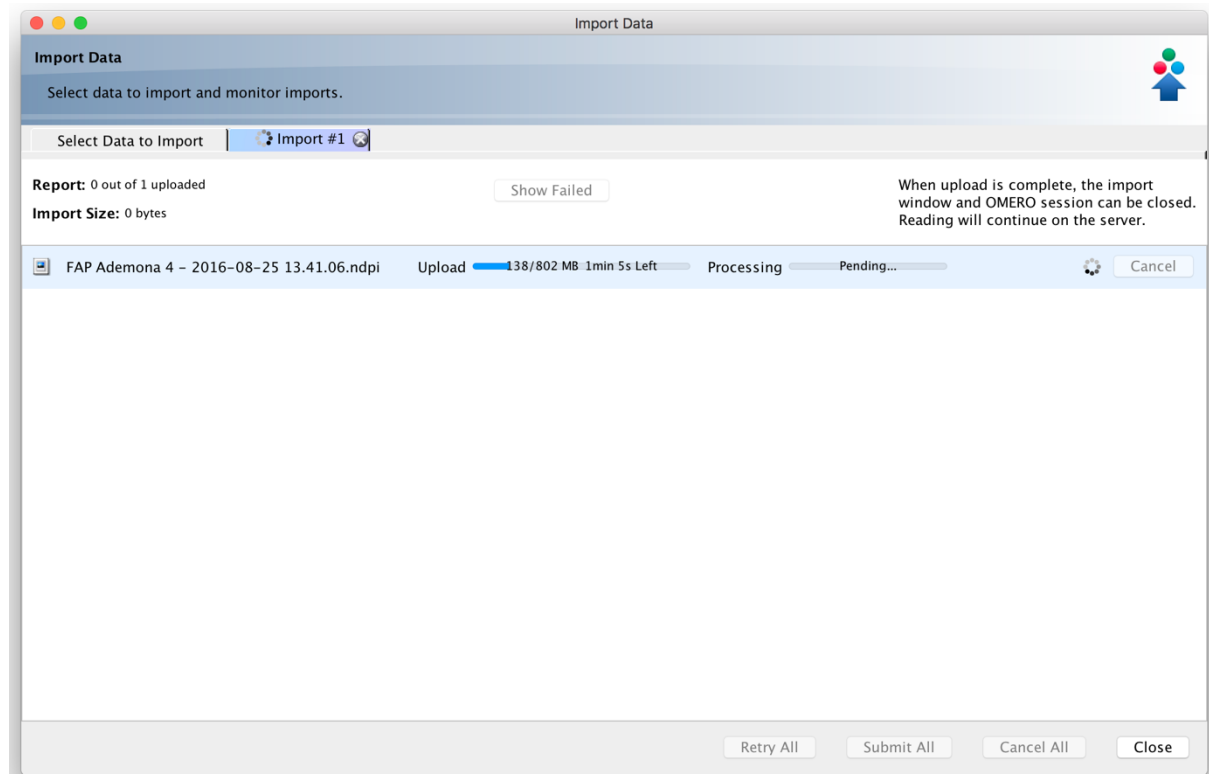
When ready to upload, press the "Add to the Queue" button.

Add to the Queue

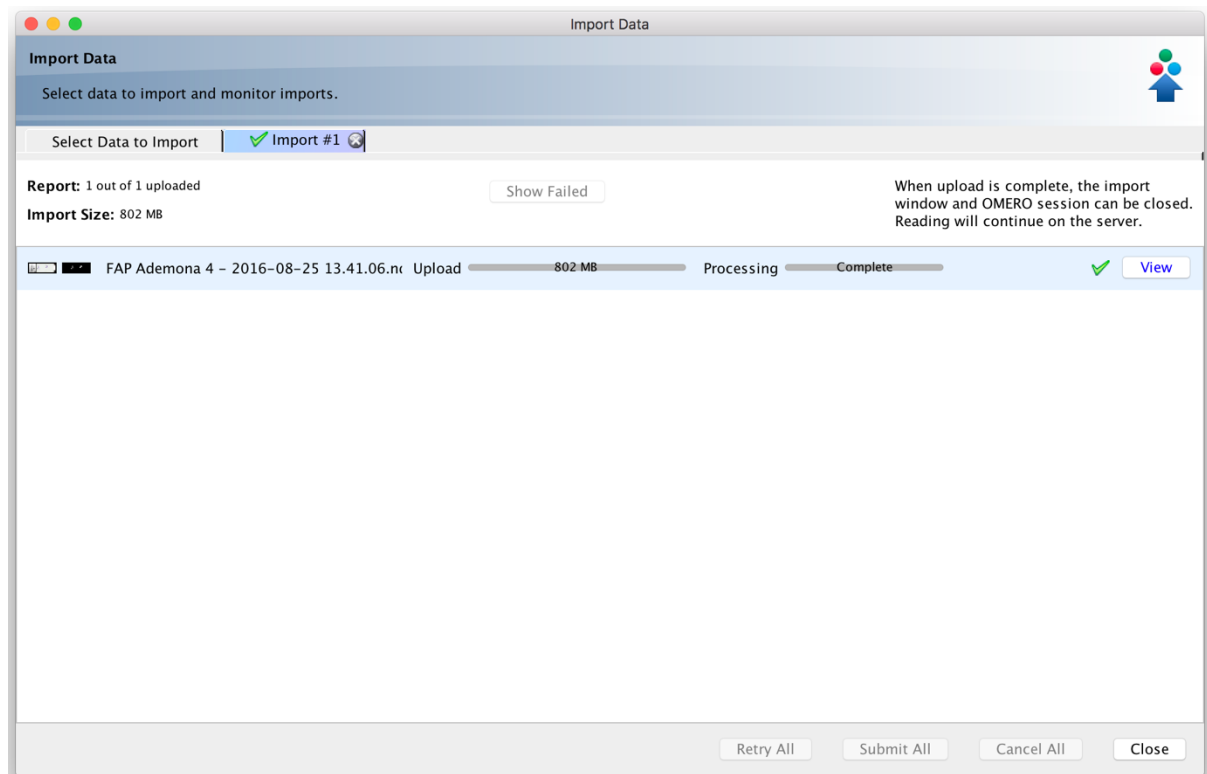
Then from the “Import Data” dialog press the “import” button to start the Upload

Import

The Import is now underway

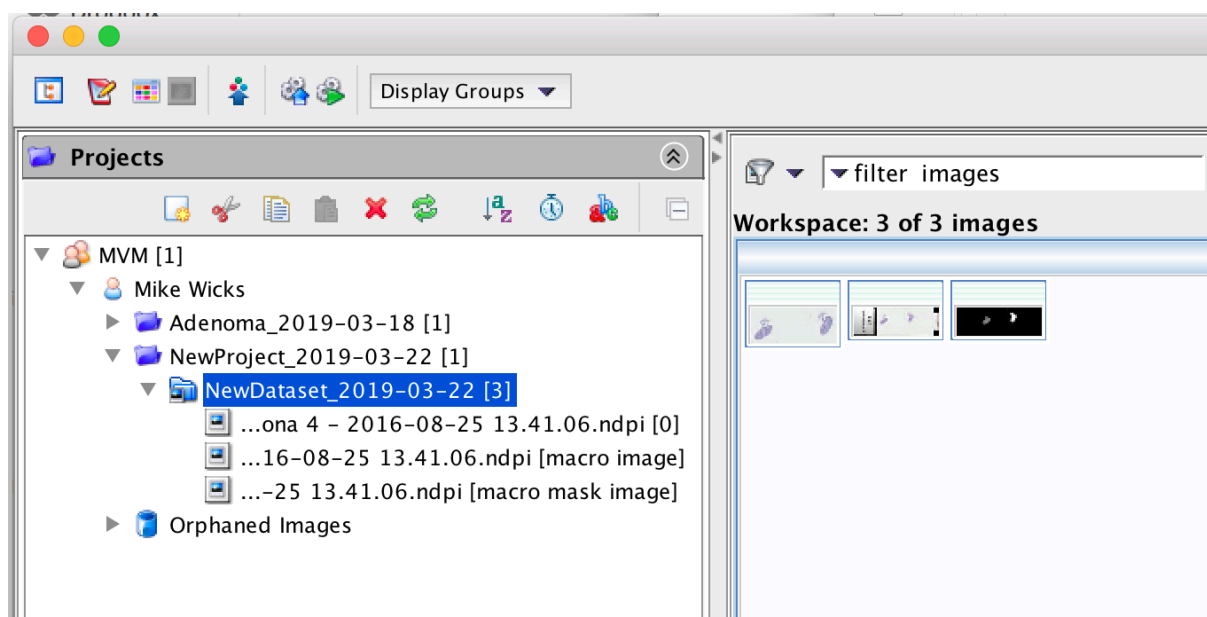


When the Import has successfully completed, you should see the screen like this ...

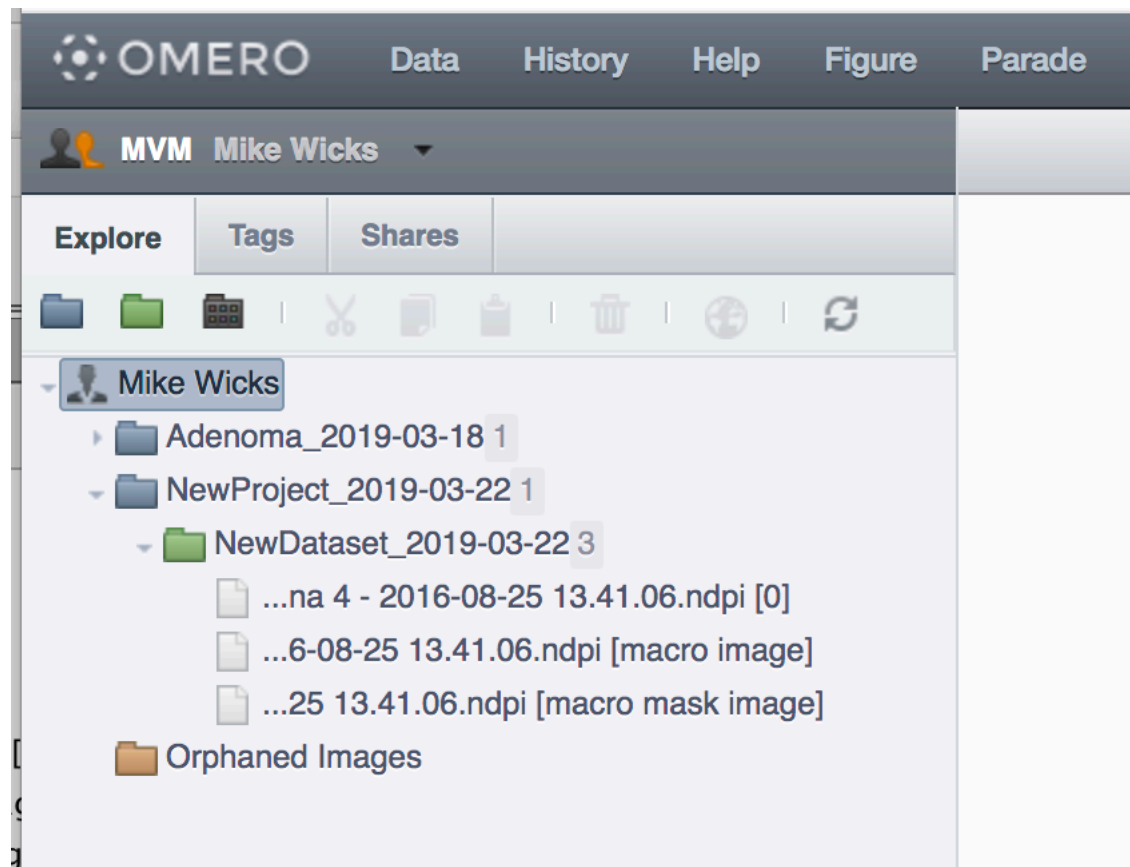


If for any reason you do not get a GREEN TICK indicating SUCCESS, contact your local OMERO Administrator!

Close the Import Dialog, and refresh the window in “OMERO Insight” to check that the uploaded images are where you expect them to be, thus:



Then check you can see them via the OMERO Web Client:



You can also check them in the Workbench itself!

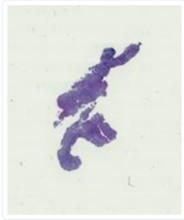
Comparative Pathology Workbench Benches (2) Sources (6) Images (4) About

[Home](#) / [Sources](#) / [CZI omero](#) / MVM

MVM

Group contains 4 Projects:

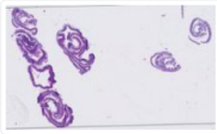
Adenoma_2019-03-18



- Datasets: 1
- Images: 138

[View Project »](#)


CPWtest1



- Datasets: 2
- Images: 24

[View Project »](#)


imagesFromOneDrive



- Datasets: 1
- Images: 42

[View Project »](#)

NewProject_2019-03-22



- Datasets: 1
- Images: 3

[View Project »](#)

WELL DONE!

If you have got this far, you can now add your own images to your “Benches” into the Comparative Pathology Workbench!

Mike Wicks
21st March 2019